



**OSSGA**

# TRAINING PROGRAMS

**| Tours & Seminars**

# MEETING YOUR TRAINING NEEDS

OSSGA is continually looking to meet the needs of its membership and the industry at large. OSSGA is offering industry expert-led training, tours and seminars as well as certified training courses.

Courses are offered for individual sign-up or OSSGA can provide training exclusively for any organization. Delivery of training varies from course to course. Industry expert-led training is delivered by competent industry experienced individuals.

Certified training is led by experienced and government qualified instructors. These programs include both theory and practical training. Participants who successfully complete the training and test will receive a record of certified training.

TRAINING CHART							
Who Should Attend	Front Line Workers / New Employees	Supervisors	Sales & Marketing	Quality Control/ Assurance Staff	Dispatch	Health & Safety Rep	Associate Suppliers
Common Core	X	X	X	X	X	X	X
Generic Supervisor		X				X	
Aggregates 101	X	X	X	X	X	X	X
Aggregates 201	X	X	X	X	X	X	X
Quality Control	X	X	X	X	X	X	X
Specialty Modules	X	X		X	X	X	X
Train The Trainer		X				X	
X Yes Required/Recommended							

## ONLINE & IN-PERSON TRAINING IN 2026

Most training programs will continue to be offered online and in-person for 2026 — unless otherwise noted — allowing OSSGA to continue to support your training needs safely. Online attendees must have a computer, working speakers, microphone and camera. Price includes training and supporting material. Contact Julie Harrington to assist with your booking needs at [julie@ossga.com](mailto:julie@ossga.com) or (905) 301-1025.



# CERTIFIED TRAINING



## SURFACE MINER COMMON CORE TRAINING

**\*Mandatory for all workers on an aggregate site**

This program is intended to train anyone working on a surface mining site. The Occupational Health and Safety Act and Surface Miner Training Standard states that anyone working on a surface mining site must have Surface Mining Common Core Requirements training.

**Duration:** One day (six to eight hours)

**Overview:** Recognizing and avoiding hazards specific to a surface mining environment. Safe practices through three core modules (U5030, U5031 and U5032) including:

- Lock out/tag out
- Safe operation of power
- Hand tools

**Who Should Attend:** Anyone working on a surface mining site.

**Documentation:** Documentation of training will be issued for each participant who has successfully completed the course.

### Dates & Locations

**In-Person (Mississauga):** April 20, July 29 and October 5, 2026

**Online:** February 5, March 19 and July 10, 2026

### Price:

OSSGA member – \$450 p.p.  
Non-member – \$550 p.p.

## GENERIC FIRST LINE SUPERVISOR TRAINING

**\*Mandatory for all workers on an aggregate site**

This program is intended for supervisors directly employed by a surface mining company who supervise workers on the surface of an operation. The training covers all six modules below.

**Duration:** Three days

### Overview:

- U6300 – Follow Safety Program
- U6301 – Prepare for Emergencies
- U6302 – Follow Health & Hygiene Procedures/Guidelines
- U6303 – Practice Effective Communication
- U6304 – Manage Work Area Activities
- U6305 – Manage Employees
- U6306 – Assess, Control and Apply Ventilation Systems in Workplaces

**Who Should Attend:** Anyone who directly supervises employees at a surface mining operation (owners, managers, lead hands and group leaders) or is working towards becoming a supervisor.

**Documentation:** Documentation of training will be issued for each participant who has successfully completed the course.

### Dates & Locations

**In-Person (Mississauga):** April 21-23, 2026 and October 6-8, 2026

**Online:** March 2-4

### Price:

OSSGA member – \$1,175 p.p.  
Non-member – \$1,325 p.p.

# TRAIN THE TRAINER

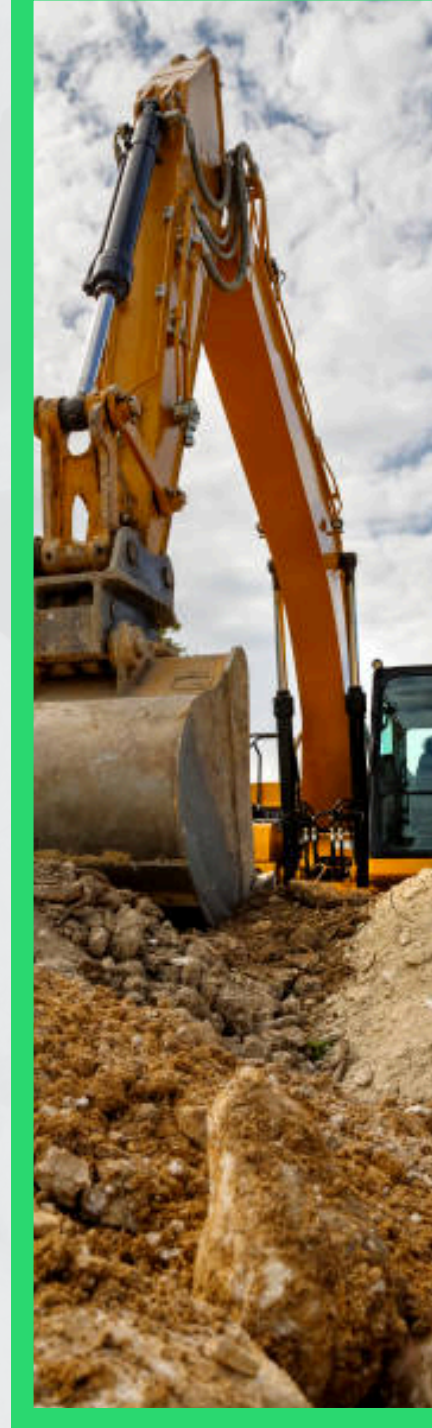
The Train the Trainer course is three days long. The program consists of instruction in adult-centred teaching methods and principles of learning. Much of the program consists of the participants engaged in lesson planning and presentation/classroom delivery. The purpose is to transfer knowledge to participants to evaluate and help develop of their skills and comfort level.

Class sizes are small and require participants to do presentations and work in small groups to practice, apply and review the material and skills delivered during the course. Participants can apply this to their own Ministry of Training, Colleges and University (MTCU) modular training programs.

## **COURSE TOPIC AREAS INCLUDE:**

- Discover ways to develop and design learning for adults
- Explaining the importance of communicating learning to trainees
- Identifying barriers to communication
- How to manage difficult situations when facilitating adult learning
- How to use visual aids
- Develop evaluation techniques to confirm learning has occurred
- Develop training delivery methods
- Legislation required for training

The future trainer should be a person of integrity with confidence in their area of expertise but must want to teach others and have desire to help others, which is sometimes very challenging. Trainers must have the capabilities to transfer skills and knowledge to those starting or moving forward in the workforce. Future trainers must be aware of the possibility of consequences for cutting corners or passing someone who may not be ready.



## **Dates & Location (In-Person):**

- April 14-16, 2026, Mississauga

## **Price:**

- \$1,450 OSSGA member p.p.
- \$1,650 non-member p.p.

This course is for both new and experienced instructors who are/will be responsible for developing, delivering and evaluating MTCU module training programs.





# AT YOUR SITE, ON YOUR EQUIPMENT

## Specialty Module Training

Beyond the first three Common Core modules, employees may require additional specialty modules from U5033 to U5057. Each person needing one of these modules has 12 months to get knowledge and experience. But they must still be proven competent with a basic training program (owner's manual basic operation etc.).

**OSSGA trainers will certify your staff, on your site, on your equipment.**

If you have multiple employees requiring different modules, we can provide all of it at the same time. Contact Julie Harrington ([julie@ossga.com](mailto:julie@ossga.com)), OSSGA's senior director of training and events, to schedule the training that suits your needs, without affecting your operations.

## Get Your Staff Certified!



# SPECIALTY TRAINING



**U5033 – Operate Elevated Work Platform;** Under regulations 147 from OSHA this training also requires a specific training session on each specific model. Operators also require fall protection harness training or WAH. Working at Heights is highly recommended.

**U5034 – Operate Hydraulic Excavator**

**U5035 – Operate Skid Steer**

**U5036 – Operate Dozer**

**U5037 – Operate Scraper**

**U5038 – Operate Grader**

**U5039 – Operate Front End Loader**

**U5040 – Operate Fuel Truck;** Any truck with a fuel tank at the back of it would be considered a fuel truck. Operators should also have spill response training and fire extinguisher training.

**U5041 – Operate Services Vehicle;** This is for all maintenance personnel. They may also require modules U5040, U5044, U5051, U5052, U5053 and U5057. Certain service vehicles also have a small boom and if equipped they would require hoisting/rigging and mobile crane training (0-8 tons).

**U5042 – Operate Production Haulage Truck;** Any truck of any size which is being used to take material from a face to a crusher or screener. Also any truck being used to stock pile material.

**U5043 – Operate Water Truck;** Any truck with a tank at the back of the truck with water being used to control dust on site.

**U5044 – Operate Forklift;** Forks added to any backhoe, loader or skid steer would be considered a forklift or any specific forklift. Forklift also requires additional training for the specific class of forklift being operated.

**U5045 – Operate Portable Conveyor**

**U5046 – Operate Stationary Conveyor/Radial Stacker Conveyor**

**U5047 – Operate Portable Crusher**

**U5048 – Operate Stationary Crusher**

**U5049 – Operate Portable Screen**

**U5050 – Operate Stationary Screen**

**U5051 – Operate Generator over 10 kVa;** Certain welders have built in generators over 10kVa.

**U5052 – Operate Portable Pump;** Any water pump of any size. Gas, diesel, electric, etc.

**U5053 – Operate Compressor;** Any operator operating any air tools or hydraulic tools also is required to have basic training on tools and is required to wear safety glasses and a face shield.

**U5054 – Operate Production Drill**

**U5055 – Handle Blasting Agents, Explosives and Detonators**

**U5056 – Blast Rock**

**U5057 – Operate Flame Cutting Equipment;** Any equipment being used to cut or heat metal using oxygen with acetylene or oxygen with propane. If using an open flame torch or open flame heater additional training is required under the TSSA rules.

Additional training available for a supervisor would include risk assessment training, auditing and possible coaching if needed (Supervisor Training U606).



# INDUSTRY EXPERT LED



## OSSGA AGGREGATES 101

OSSGA invites you and your staff to get core education about the aggregate industry, its terminology and different processes, policies and practices. Product types, licensing, processing, delivery, quality control, best practices and more will be discussed.

**Duration:** One day (six to eight hours)

### Overview:

- Definitions: Sand, gravel, quarry, recycled aggregate and more
- Aggregate licensing
- Rehabilitation
- Aggregate processing: Stripping, drilling, blasting, crushing and more
- Delivery of product
- Quality control and specifications
- Controls, obligations and best practices

**Who Should Attend:** This course is designed for those new to the aggregate industry, with minimal aggregate experience (non-aggregate functional role), employees transferred into the aggregate division and those seeking an increase in aggregate knowledge.

### Dates & Locations (In-Person)

#### King City:

- February 25, 2026

#### Mississauga:

- June 16, 2026
- October 21, 2026

#### Price:

OSSGA member – \$450 p.p.  
Non-member – \$550 p.p.

## OSSGA AGGREGATES 201

This course is an expansion of Aggregates 101 with an in-depth focus on operations. The full-day session will dig deeper into the world of aggregate to provide more experienced employees with a stronger foundation on the fundamentals.

**Duration:** One day (six to eight hours)

### Overview

- Blasting: Regulations, blast design, vibration, overpressure, public relations and more
- Load and haul: Techniques, conditions, optimal haul distances and truck/loader pass match
- Crushing: Material characteristics, primary/secondary/tertiary/quaternary and more
- Screening: Speed, slope, scope, wash screens and screen media

**Who Should Attend:** This course is designed for experienced site workers (two to seven years) or anyone with an interest in acquiring a more in-depth knowledge of the operational side of the industry.

### Dates & Location (In-Person)

#### Mississauga:

- February 26, 2026
- June 17, 2026
- October 22, 2026

#### Price:

OSSGA member – \$450 p.p.  
Non-member – \$550 p.p.

# INDUSTRY EXPERT LED

## QUALITY CONTROL

In-class, on-site and hands-on laboratory training will take attendees through key processes to address quality control. Attendees will learn best practices to employ good testing procedures and troubleshooting to ensure consistency. Industry experts will use case studies to help attendees learn good quality control processes and procedures.

**Duration:** One day (six to eight hours)

### Overview:

- How to take a good sample with different types of material
- Test procedures – gradation/physical
- Analysis
- Troubleshooting
- Case studies
- How screening impacts QC
- QC - Back to Basics

**Who Should Attend:** This course is designed for employees of aggregate producers as well as contractors and consultants. All individuals seeking knowledge of quality control processes who are new to the industry or have minimal experience, and individuals with experience wishing to increase their knowledge in best practices.

### Dates & Locations (In-Person):

#### Dundas, Ontario

- April 28, 2026

#### Codrington, Ontario

- May 26, 2026
- September 22, 2026

### Price:

OSSGA member: \$450 p.p.

\*Includes lunch and all-day coffee, tea and water.







## OSSGA OPERATIONS TOUR

The Operations Tour visits a variety of properties for behind the scenes tours. Get access to aggregate sites and supplier operations you wouldn't normally get to visit.

### Who Should Attend:

This tour welcomes employees across the aggregate industry, including quarry or pit managers, equipment and service suppliers and public sector employees

#### Date & Location

**Site:** TBC

**Dates:** September 22-23, 2026

## OSSGA REHABILITATION TOUR

Join your industry colleagues for dinner with presentations and a tour of regional aggregate sites with excellent examples of rehabilitation. Learn best practices for planning and implementing rehabilitation that goes beyond the minimum, and then tour exemplary rehabilitation first hand.

### Who Should Attend:

This tour is designed for new to experienced employees whose role includes rehabilitation of aggregate properties. Aggregate producer employees, consultants, students, environmental NGOs, government officials and public sector employees are encouraged to attend in order to enhance their knowledge of rehabilitation best practices.

**Sites and dates to be confirmed.**

