



ROCK TALK

VOLUME 12, NUMBER 2

CONTENTS



Operations & Service Training Day **6**

2013 OSSGA Golf Tournament **8-9**

Wheels & Tracks Event **10**

Caledon Pit Run **11**

Members' Corner **12-13**

BULLETIN BOARD
14-15

- New OSSGA Members
- Source Book/Avenues
- Classifieds

Aggregates 101

...for Educators.

This summer, OSSGA partnered with Mining Matters to provide Ontario educators with an exclusive pass behind the berms at three active pits and quarries, and one former aggregate property in southern Ontario. (Photo: Milton Limestone Quarry)

For the full story, please see pg. 3.

Collaboration is Key!

— OSSGA 2013 Rehabilitation Tour —

OSSGA's annual Rehabilitation Workshop & Tour took to the Oro Moraine and Carden Plain on June 25 to explore some of the best examples in collaboration between aggregate producers and industry stakeholders.

DAY 1

"This is the first time OSSGA has hosted a tour in this area and we are excited to be here," said OSSGA Environment & Education Manager Cynthia Robinson on the evening of June 24 before introducing three guest speakers who shared their insights on collaborative opportunities at some of the aggregate properties featured on the tour.

continued on pg. 5



Essential materials for building a strong Ontario

PRODUCTIVITY.

ALL DAY. EVERY DAY.



NEW CAT® K SERIES™ WHEEL LOADERS

Meet your production targets with the Cat® 966K, 972K and 980K.

- New joystick steering maintains operator productivity all shift long
- Exclusive Cat Regeneration System prevents work stoppage
- New Performance Series buckets load consistently, save fuel

www.CatAllDay.com/loaders

www.toromontcat.com



PROUDLY CANADIAN
OWNED & OPERATED

TOROMONT



OSSGA EVENTS: Teacher's Tour (cont'd)

continued from pg. 1

Most members of the general public will never see the inside of a working pit or quarry.

On June 1, however, Ontario educators were granted a rare opportunity to step behind the berms at four aggregate operations, courtesy of the Ontario Stone, Sand & Gravel Association (OSSGA) and Mining Matters.

"I really didn't (know what to expect) other than to further my education — and that expectation was indeed met, over and above," said Nicole Marie Scott-Stewart, an outdoor educator with the District School Board of Niagara. "The things I learned at the pit and quarry just blew me out of the water and further enhanced my education so that now I can describe to (students) how these materials are (extracted) and (used)."

Five other teachers representing Greater Toronto Area (GTA)

schools joined Scott-Stewart and her husband, Steve, for an up-close and personal exploration of the differences between pits and quarries; how aggregates are produced; the importance of aggregates to everyday life; and various approaches to rehabilitating an aggregate site to serve a broader public good.

The tour began at Dufferin Aggregates' Milton Quarry — a leading source of quality construction materials since 1962. Located on a unique geological landform known as the Niagara Escarpment, the 1,300-acre site lies just three kilometres northwest of Highway 401 and Highway 25 in the Town of Milton. Supplying major infrastructure projects from a close proximity to one of the largest markets in Canada helps significantly reduce CO2 emissions and cuts back on the amount of fuel required to transport aggregate (compared to quarries situated further afield).

Milton Quarry produces a type of stone (Amabel limestone) that is capable of producing some of the strongest and most durable construction materials ever used to properly maintain and build new roads in the Milton region. Other projects from this region include roads and bridges on Highway 407, Pearson International Airport, (Canadian astronaut) Chris Hadfield School, and much more.

continued over



Photos: OSSGA staff



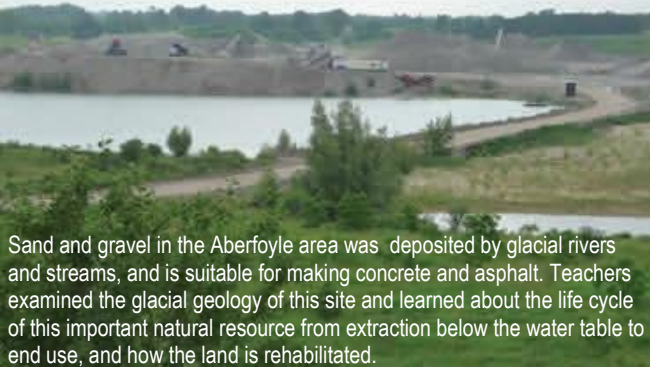
OSSGA EVENTS: Teacher's Tour (cont'd)

continued from pg. 3

The quarry also employs 80 people directly and relies on local companies to supply parts, supplies, fuel and other services. To date, over 120 acres have been progressively rehabilitated as extraction continues. In some 25 years, when all useable material will have been removed, the quarry will be blended into the adjacent landscape to include wetlands, wildlife habitats, forests and lakes.

Other stops along the tour included:

CBM Aggregates' Aberfoyle Pits, Puslinch Township



Sand and gravel in the Aberfoyle area was deposited by glacial rivers and streams, and is suitable for making concrete and asphalt. Teachers examined the glacial geology of this site and learned about the life cycle of this important natural resource from extraction below the water table to end use, and how the land is rehabilitated.

Lafarge Dundas Quarry, Town of Flamborough



Dundas Quarry has been mining aggregates for almost a century. The quarry produces products used in concrete, asphalt, glass, fertilizer filler and the agricultural industry. Teachers learned about this site's history and fascinating geology, including how the site operates, and about Lafarge's Environmental Management System.



Photos: OSSGA archives

Kerncliff Park, Burlington

This 99-acre former quarry supplied material for Pearson International Airport from 1948 to 1957. In 1995, the land was transferred to Conservation Halton to become Burlington's ecological gateway to the Niagara Escarpment. Today, Kerncliff Park is an outstanding example of natural regeneration in Ontario. It has been awarded OSSGA's most prestigious award for rehabilitation — The Bronze Plaque Award in 2005.

Participant comments:

It was a great trip, and I'd do it again. When you see stories about pits and quarries on TV or in the paper, you typically tend to see a big hole in the ground. But when you see ordinary workers, it changes (your) perspective a bit. It gives you the understanding that these are the guys making the stuff that builds the roads (we all) drive on.

— **Robert Prior,**
High School Teacher,
Toronto District School Board

I didn't really know what to expect. I found the people from each company amazingly friendly and willing to share their knowledge about their profession and field. We learned so much about the importance of aggregates in terms of how they're used in our everyday lives, how important the industry is to society, and how many people this industry employs.

— **Sally Warburton,**
Elementary School Teacher,
Toronto District School Board

Balancing the demand for raw materials (while) maintaining a healthy eco-system before, during and after aggregate production is something people in this industry take great pride in. They really do a great job of managing a resource that is constantly in demand and keeping a balance.

— **Bonnie Anderson,**
Teacher,
Peel District School Board

OSSGA is planning to hold another Teacher's Tour event in 2014. Please contact Cynthia Robinson for more information at (905) 507-0711 ext. 6.

OSSGA EVENTS: Rehab Tour (cont'd)

continued from pg. 1



Pre-tour workshop featuring three industry speakers

Photos: OSSGA staff

Canadian Wildlife Service's Songbird Biologist Mike Cadman reported on his work around developing beneficial management practices for bank swallows in Ontario aggregate pits and quarries; Research Assistant with the Management of Abandoned Aggregate Properties program of The Ontario Aggregate Resources Corporation Caroline Dykstra gave an overview of the research being undertaken to determine the level of success of rehabilitation projects at former pits and quarries to agriculture; and Mark Browning from the Wildlife Research and Development Section of the Ministry of Natural Resources shared some opportunities for creating biodiversity as part of progressive rehabilitation at pits and quarries.

"Tomorrow we will witness some great examples that highlight the uniqueness of the two landforms and their keepers, while pointing to some of the challenges and successes of competing land uses and collaborative efforts," said Robinson in closing to more than 50 event participants.

DAY 2

The sold-out tour began at 8:00 a.m. sharp on Tuesday with breakfast at the Horseshoe Valley Resort in Barrie, followed by a visit to two prominent natural landforms in the Orillia area — the Carden Plain and Oro Moraine. Since the natural resources in these areas are compatible with multiple land uses, such as recreation, agriculture, conservation and aggregate extraction, collaboration is paramount to finding a sustainable balance between competing land uses.

Along the way, event participants had an opportunity to interact with aggregate pro-

ducers who have collaborated with farmers and conservationists in consuming the resource in a sustainable manner and then transforming the land for public use.

Carden Plain

Finding a balance between conservation and aggregate extraction is well documented in the Carden Plain — a vast limestone plain east of Orillia. The plain was the subject of a 2012 study that found the cumulative impact of 11 quarry operations on water resources and the natural environment in the area to be negligible.

The first stop on the tour was Lafarge Canada Inc.'s Kirkfield Quarry, which collaborated on a bank swallows study with the Canadian Wildlife Service. A joint project between Lafarge and the Couchiching Conservancy is also helping protect water quality in a tributary to the Talbot River and Lake Simcoe.



Bank swallow nest at Kirkfield Quarry

In 2011, OSSGA helped the Couchiching Conservancy acquire Bluebird Ranch, a property on the Carden Plain containing important habitats for bird species at risk of extinction, such as the Meadowlark, Bobolink and, of course, bluebirds.

Before breaking for lunch, the group paid a visit to Dufferin Aggregates' Carden Quarry for a first-hand account of how a quarry manages water through pumping and discharge.

Oro Moraine

The afternoon portion of the tour shifted to a primarily forest- and wetland-rich environment, known as the Oro Moraine. The Moraine was created during the last ice age when huge volumes of silts, sands

and gravels were deposited. Today, it is a key area for nature observation, spring wildflowers, hiking, and mountain biking. Featured stops along the Moraine tour included OSSGA member companies G.H. Stewart Construction, Lafarge Canada Inc. and Nelson Aggregate Co.



G.H. Stewart Construction

G.H. Stewart Construction

G.H. Stewart Construction has supplied aggregate from the Oro Moraine to local projects, such as Casino Rama, the public library and Soldiers Memorial Hospital. Tour participants explored a series of sand and gravel pits that are being progressively rehabilitated to agricultural, recreational and residential uses.

Lafarge Orillia Pit

Mined since 1973, the Orillia Pit is an active sand & gravel operation with land holdings belonging to three farmers. Here, tour participants were able to see how agricultural land is extracted and returned to production in accordance with landowner requirements.

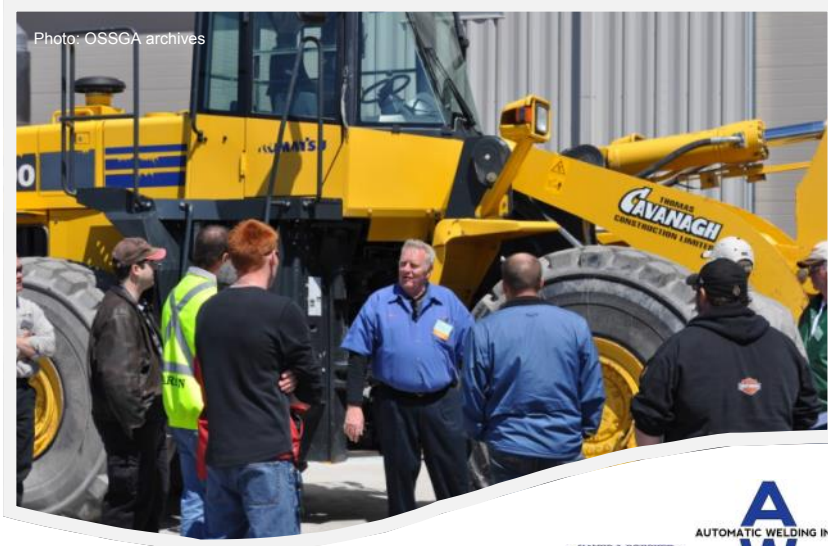
Nelson Uthhoff Quarry

The process of rehabilitating a quarry is quite distinct from that of a pit. At this site, tour participants witnessed slope rehabilitation practices. The quarry floor visitors were standing on will one day be submerged at the bottom of a lake large enough for the community to enjoy. The quarry is also known for leasing the land to the police force for training purposes.

For more information on the Rehabilitation Tour, please contact Cynthia Robinson at (905) 507-0711 ext. 6. For other OSSGA events, please visit www.ossga.com/events.

OSSGA EVENTS: Training Day

Photo: OSSGA archives



“Back to Basics” was the order of the day at OSSGA’s seventh annual Operations & Service Training event on May 4 in Thorold, ON.

Over 40 attendees engaged in a full-day, hands-on refresher on the safe operation of a wide range of staple plant equipment, including the undercarriage of a hydraulic excavator, screens, front-end loaders, ABCs of crushing, conveyors and breakers/hammers.

OSSGA would like to thank **Toromont CAT**, **Screen Systems Inc.**, **Kal Tire**, **Emerson Industrial Automation**, **Walker Industries** and **AFM Industries** for lending their expertise and facilities for the training event.

*In addition to the above companies, OSSGA also thanks **Nortrax**, **W.S. Tyler**, **Automatic Welding** and **Lafarge Canada Inc.** for their generous support.*

For more information on this or any other OSSGA event, please visit www.ossga.com/events or contact Training & Development Manager Julie Harrington at (905) 507-0711 ext. 5 or e-mail jharrington@ossga.com.



OSSGA 2014 Annual General Meeting

VISIT WWW.OSSGA.COM FOR DETAILS



Recycling Aggregate on Niagara Escarpment Subject to Exemptions

Recent changes to regulations under the *Niagara Escarpment Planning and Development Act* have resulted in some important exemptions for development around aggregate recycling in the Niagara Escarpment Plan area.

On January 1, amendments to Ontario Regulation 828/90 ("Reg. 828") under the *Niagara Escarpment Planning and Development Act* (NEPDA) came into effect.

Reg. 828 is the regulation under the NEPDA that exempts certain kinds of development from the need to obtain a development permit from the Niagara Escarpment Commission (NEC) within the Niagara Escarpment Plan Area.

In general, development that has little or no environmental impact, or that has proven to be effectively regulated under other legislation, has been exempted from the requirement to obtain a separate development permit under the NEPDA. The expanded list of exemptions now includes the recycling and reprocessing of aggregate, subject to a number of conditions.

In order to qualify for the exemption, the recycling activity must be incidental to the existing extraction operation. Appropriate amendments to licence and site plans issued under the *Aggregate Resources Act* (ARA) are still required to be obtained, as well as any other required approvals or authorizations from the Ministry of Environment. Recycling activities must be in accordance with all ARA licences and site plans.

Limits have also been imposed on the distance of recyclable material stockpiles to water bodies and the water table, as well as a requirement that the recycled or reprocessed materials not be used in site rehabilitation, berming or screening of the pit or quarry.

For the full text of the exemption, as well as to see other recent amendments made to Reg. 828, please visit: www.e-laws.gov.on.ca/html/regs/english/elaws_regs_900828_e.htm

For more information about Reg. 828 and how it might affect you, please contact the Niagara Escarpment Commission at www.escarpment.org



**HARD WORK
WAS NEVER THIS EASY.**

Big productivity shouldn't require a lot of extra effort. And it won't on a John Deere K-Series II Loader. Our PowerTech™ diesels provide impressive acceleration and torque, along with the horsepower needed for fast and full bucket fills. See your Nortrax representative for more details. Nobody digs deeper or tries harder to keep you productive and profitable, **every day.**

Contact Nortrax:
(866)366.8722

NORTRAX
www.nortrax.ca

Nortrax is a proud sponsor of the
Ontario Stone, Sand & Gravel Association



OSSGA EVENTS: 2013 Golf Tournament

Photos: OSSGA staff



OSSGA members were encouraged to nominate their peers for an industry award at the OSSGA registration desk. For more information on OSSGA's awards program, please visit our website at www.ossga.com/industry_advancement.



OSSGA launched the details of the 2014 Annual General Meeting, which will take place in Ottawa, featuring Canadian Astronaut Chris Hadfield. For more information on the upcoming AGM and other OSSGA events, please visit www.ossga.com/events.



Hole sponsor Ez-Scale (Trouble-Shooting Services Inc.)



Congratulations to first place winners (left to right): Mike Pidgeon, Glenn Milum and David Shea of Top Lift Enterprises; as well as Dave Lumsden of Waterford Group



Grand prize winners Ed Lamb of Waterford Sand & Gravel Ltd. (far left), Young of ELRUS (far right), pictured with OSSGA CEO Moreen Miller

Below: Golf carts sponsored by Toromont CAT (Silver Sponsor)



SPONSOR THANKS:

- Aecon Construction
- Aercoustics Engineering
- Amaco Equipment
- Atlas Copco
- Bot Aggregates Limited
- Brock Aggregates
- Bulk Transfer Systems
- Cambium Environmental
- Cowan Insurance Group
- Creighton Rock Drill
- Dufferin Aggregates
- Elrus
- Equipment Sales & Service
- Ez-Scale (Trouble Shooting Services Ltd.)
- Golder Associates Ltd.
- Grant Aggregate
- HMA
- Kal Tire
- Lafarge Canada Inc.
- Liebherr
- Luff Industries
- Nelson Aggregate Co.
- Nortrax
- MHBC Planning
- Gary Oswald Blasting Ltd.
- Rail Veyor
- Sovereign Fusion
- Steed and Evans Limited
- Stephens-Adamson/Metso
- Strada Crush
- Superior Industries
- Telsmith Inc.
- Toromont CAT
- Top Lift Enterprises
- Valley Blades Ltd
- Waynco
- Wood Bull LLP

Third place winners: Bill Dwyer, Rousselle, Kal Tire



Hole sponsor Sovereign Fusion



(Left to right): Patricia Madden, Stewart McCallum and Gary DeBoer of Austin Powder Ltd.; and guest Dave Barton



Putting green sponsor Kal Tire



Lafarge Canada Inc. foursome (left to right) with Bill Coco, Tony Iacocca, Dale Hollingsworth and Paul Lum



Event winners (left to right): [Name], Mike Crowley, Darrin [Name] and Chris Flaherty of [Name]



Event sponsor Golder Associates Ltd.

Construction Equipment Comes to Life in Simcoe County!

1936 Mack, courtesy of Fowler Construction of Bracebridge, ON



Photos: OSSGA staff

1951 John Deere MC Tractor (Nortrax) produced between 1949-52. Over 10,000 of these models were sold at an average price of \$2,000 per unit.



Working vintage steam-powered roller



This summer, OSSGA teamed up with The Historical Construction Equipment Association (HCEA) and Simcoe County Museum to bring the largest, continuously staged event of its kind in North America back to Simcoe County.

“Wheels & Tracks in Motion”, which showcases working historical construction equipment — from vintage roadgraders, to earth-movers, dozers, steamrollers and rock crushers — stormed the Simcoe County Museum for the 12th consecutive year on June 8 and 9.

“This year we had more than 1,350 people in attendance over the two days,” said HCEA President Frank Rooney. With visitors from England, Quebec, the United States and the far corners of northern Ontario, Rooney believes “the addiction to

The 1918 Buckeye Traction Ditcher was originally operated in the Windsor area and used on projects throughout Ontario, including the construction of airfields at Canadian Forces Base Borden and to install drainage tile for an apple orchard.

old construction equipment in action” is more widespread than ever!

Among the featured displays was a 1936 Mack truck, courtesy of Fowler Construction; a 1951 John Deere MC Tractor, Nortrax; a fully restored 1946 Galion road grader, Bannerman Construction; and many classic items contributed by Jim Dick of James Dick Construction Limited, who generously donates his equipment for transporting display exhibits regularly.

The event also featured wagon rides to gravel pits for live demonstrations of steam powered rollers, vintage road-building

equipment, rock crushing, grading, hoisting and much more.

HCEA is a group of some 350 volunteers formed in 1996 to preserve antique construction equipment while recording Canada's construction history for the next generation.

Steam- and diesel-powered cable shovels will be resurrected at the Simcoe County Museum on October 19, featuring demonstrations by the HCEA and equipment vendors. Don't miss it!

For more information, please visit the Simcoe County Museum's website at www.museum.simcoe.ca or call (705) 728-3721.

EVENTS: 2013 Caledon Pit Run

Photo: Courtesy of Lafarge



2013 CALEDON PIT RUN RAISES \$20,000 FOR BETHELL HOSPICE FOUNDATION

The second Annual Caledon Pit Run raised money — and hope — for the Bethell Hospice Foundation at the Lafarge-Aecon Caledon Pit on September 14. Attracting approximately 100 runners and 250 visitors, the run was a huge success, doubling last year's fundraising total to \$20,000 for Caledon community services. Over 250 kilograms of food was also collected for the Bethell pantry.

Lafarge Canada Inc. and Aecon Group Inc. held the first five-kilometre trail run and kid's one-kilometre fun run at their active pit in 2012, drawing an unanticipated 75 runners and raising over \$8,500 for the Caledon community. Due to the event's instant success, organizers vowed to make the run an annual event, with proceeds going to a different local charity each year. The run also doubles as an open house event for the companies, demonstrating the attributes of an active aggregate pit and rehabilitation process via public tours, equipment displays, as well as a silent auction. Kids also engaged in a number of activities in the Kid's Corral play centre with Lafarge company mascot, Rocky (pictured above, far left), while local sponsors enlightened the public on their products and services.

The Caledon Pit was awarded the Ontario Sand, Stone & Gravel Association's Award of Excellence in 2004 in recognition of the site's many years of cumulative efforts, hard work and dedication to safety, environmental stewardship, property enhancement, progressive rehabilitation and community relations.

"Our brand is to help build better cities and better communities," said Dale Hollingsworth, vice president of GTA/Central Aggregates for Lafarge Canada Inc. "Through the involvement of our people, and large-scale volunteer efforts like the Caledon Pit Run, we work with our partners and stakeholders to build better communities. For us, it's about being part of the community and how we participate in the lives of our neighbours and our communities to help make these better places to be," added Hollingsworth.

Bethell Hospice has a 20-year history of providing community-based palliative care and compassionate support to families struggling with a life-limiting illness.

For more information on the Caledon Pit Run and future updates on the 2014 event, please visit www.caledonpitrun.ca.

Polydeck



Screen Corporation welcomes Alex Caruana, who has joined the company as Ontario Regional Manager. Alex brings more than five years' experience on the producer side of the aggregate industry to Polydeck and will be

responsible for sales, service and support to customers throughout Ontario from his office in Brantford. He has a degree in civil engineering and his past experience includes maintenance, production and mine planning, as well as health and safety program stewardship and inventory management.

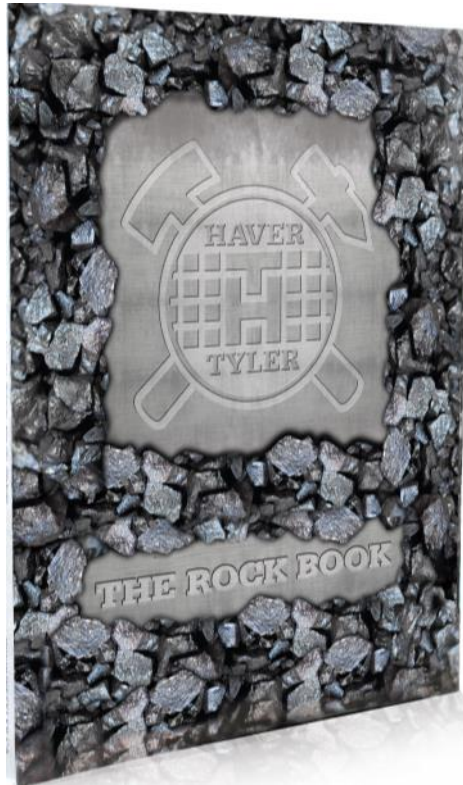
Polydeck Screen Corporation has been a leader in the development and evolution of synthetic modular screen media since 1978. From its headquarters and manufacturing facility in Spartanburg, South Carolina, Polydeck offers more than 1,000 design options in polyurethane and rubber screen media, as well as custom frame designs and screen accessories to the aggregate, coal and mining industries throughout the western hemisphere.

For more information, please visit www.polydeck.com.

W.S. Tyler

A leading manufacturer of screening, washing and pelletizing equipment and services, announces the release of *The Rock Book* in three additional languages — Chinese, French and Spanish.

Since its initial release in 2012, the book's popularity for aggregate, mining and industrial minerals processing knowledge and expertise has grown far beyond English-speaking nations. Like the English edition, the new language editions include the latest technologies,



definitions and specification tables for screening, washing and pelletizing operations.

From detailed information about the various wire meshes used in screening to open area calculations and the most advanced technologies used in processing today, *The Rock Book* is an effective resource and training tool for all mines and quarries. This encyclopedia of screening information educates novice employees on the basics of screening, while helping a skilled technician or engineer identify the required screen media and vibrating screen components and accessories for specific application challenges.

The book includes full-color images, detailed 3-D schematic drawings and specific descriptions throughout its five sections (screens, components, equipment, services and resources).

Visit www.tylerrockbook.com to request a free printed copy or to access the digital version. Printed copies can also be obtained by calling 1 (855)WSTYLER (978-9537).

continued on pg. 13

ARE YOU AN

INDUSTRY AWARD

WINNER?

- ✓ **Do you promote good practices within the aggregate industry?**
- ✓ **Do you go beyond what's required by regulation?**
- ✓ **Do you provide examples others can follow?**
- ✓ **Do you help raise the bar by integrating social, environmental and economic principles into your operations?**

If you answered "yes" to one or more of the above, visit www.ossqa.com (awards tab) to see which award(s) you may qualify for. Hurry!

APPLICATIONS DUE NOVEMBER 1!

continued from pg. 12

W.S. Tyler has also opened Haver & Tyler Rocky Mountains (HTRM), a new sales and service centre in Chilliwack, B.C.

HTRM serves aggregate, mining and industrial mineral producers in Washington, Oregon, Idaho and Alaska, as well as British Columbia, the Yukon and Northwest Territories, by providing better access to W.S. Tyler's products and services. It offers 24-hour delivery of parts and screen media within British Columbia, with slightly longer delivery times to all other locations.

The new Vancouver-area location is focusing on the company's flagship double-eccentric F-Class vibrating screen, oversized XL-Class vibrating screen and Pro-Deck screen optimization service. Through the Pro-Deck service, technicians complete an extensive on-site analysis of vibrating screens and screen media to determine optimal solutions. The resulting Pro-Deck configuration delivers increased efficiencies, with minimal downtime and maintenance costs, thus maximizing product quality and profits for mines and quarries.

Haver & Tyler Rocky Mountains is the second of three new facilities the company is opening in 2013 under the Haver & Tyler brand.

For more information, contact W.S. Tyler, 225 Ontario St, St. Catharines, ON L2R 7B6. Call 1 (800) 325-5993, fax (905) 688-4733, e-mail sales@wstyler.ca, or visit the website at www.wstyler.ca.

Golder

Associates Ltd. has expanded its laboratory services in Ontario. Strategic enhancements at several Golder laboratories, as well as the construction of a new facility, have increased capacity and service capabilities.

Enhancements include a new laboratory in Markham, relocation and expansion of its Mississauga facility, the addition of new equipment and more space at its Cambridge and Whitby laboratories, and new equipment added to its Barrie facility.



Golder's lab services in Ontario include soil index testing, aggregate testing, hot-mix asphalt and bituminous liquids testing, concrete testing, rock engineering properties and soil engineering properties. With additional laboratories in London, Ottawa, Windsor and Sudbury, Golder's nine facilities in Ontario are supported by an integrated team of qualified technicians.

For more information, please contact John Watkins at (905) 723 2727 or e-mail John_Watkins@golder.com.

Atlas Copco

Prime power generators are now available through Volts Energies, of Laval, Québec. This new relationship will allow Volts Energies to provide a top-of-the-line product to the prime power generation market.

According to Mike Marion, product and business development manager for Atlas Copco Portable Energy, Atlas Copco has a unique approach to its on-site generator and power generation business. "We know that customers don't really need a piece of equipment — what they actually need is reliable, risk free, predictable power. In fact, that is our core value — Predictable Power."

For Atlas Copco, this signifies both a pledge to customers and a state of mind within its organization. With Predictable Power, Atlas Copco communicates clearly to customers what they can expect. The company's generators are made for harsh environments, frequent relocation and demanding loads, environments where Pre-

dictable Power is a necessity.

Volts Energies specializes in the integration of efficient energy systems, including solar photovoltaic, solar pumps, generators, wind and cogeneration. The company is recognized for its expertise in the field for its feasibility studies, energy efficiency consulting and design and manufacture of energy efficient systems. Over the past decade, Volts Energies has completed projects for more than 2,000 customers in North and Latin Americas.

Celebrating its 140th anniversary, Atlas Copco is a world-leading provider of prime power generators, as well as compressors, expanders and air treatment systems, construction and mining equipment, power tools and assembly systems. The company is based in Stockholm, Sweden, and has a global reach spanning more than 170 countries.

For more information, please contact Michael Marion, product & business development manager, Atlas Copco Construction Equipment Canada, at (416) 509-7231 or e-mail mike.marion@ca.atlascopco.com.

Members' Corner is an outlet reserved exclusively for OSSGA members to feature good news stories in *Rock Talk*. Please note that space is limited and submissions may be edited for length, content and grammar.

To submit your story, please contact:

Marta Blocki at
mblocki@ossga.com or call
(905) 507-0711 ext. 1.

Bulletin

WELCOME NEW MEMBERS

ACTIVE

Katia Kissova
Sase Aggregate Ltd.
Concord, ON Tel: (905) 738-9980

Products/Services: Sand & Gravel Pit

Russell Oldfield
RJO Contracting
King City, ON Tel: (416) 458-8592

Products/Services: Sand & Gravel Pit

Gord Turcotte
Torbolton Resources
Nepean, ON Tel: (613) 222-0191

Products/Services: Aggregate properties

ASSOCIATE

Stan Denhood
Harden Environmental Services Ltd.
Puslinch, ON Tel: (519) 826-0099
www.hardenv.com

Products/Services: Hydrogeological studies, soil testing, hydrology

Tiziana Milani
Rizmi Stone & Aggregates
Maple, ON Tel: (905) 303-5040
www.rizmistone.com

Products/Services: Recycled concrete, virgin aggregates, granite pavers, decorative stone

Dave Winfield
Provix Inc.
Alliston, ON Tel: (888) 434-0253
www.provix.net

Products/Services: Camera systems, lighting for equipment & vehicles, back-up alarms, proximity detection

Christina Winton
Joseph Haulage Canada Corp.
Stoney Creek, ON Tel: (905) 643-0637
www.josephhaulage.com

Products/Services: Haul sand, gravel & soil

MARK YOUR CALENDARS! 2013

Generic Supervisor Training Course
November 18
Mississauga, ON

Common Core Training Course
November 21
Mississauga, ON

Curling Bonspiel
November 22
Burlington, ON

2014

Operations, Health & Safety Seminar
January 22
Toronto, ON

Annual General Meeting
February 26-28
Ottawa, ON

CLASSIFIEDS

Active, Licensed Pit for Sale/Lease

- Approximately 106 acres, with 80 acres licensed for extraction
- 40% stone and 60% sand and gravel
- Estimated 14 million tonnes remaining
- Currently 500,000-tonne annual extraction allowed
- Pit is part of larger holding also available with aggregate licensing potential
- Location: County Road 9, Alnwick/Haldimand
- Price: \$2,100,000
- Please call the undersigned for additional information:

Jerry Bryans, Sales Representative
Royal LePage, Kawartha Lakes Realty Inc.
17 Russell St. E., Lindsay, ON K9V 2W5
Office (705) 878-3737
Cell: (705) 879-9986
Fax: (705) 878-4225
Web: www.jerrybryans.com

ANNUAL SOURCE BOOK

The new OSSGA Commercial Aggregate Directory, "The Source Book", is now available. A complimentary copy of the directory has been mailed to all OSSGA members. Additional copies can be purchased online at www.ossga.com/publications.

Advertisers are eligible to receive additional free copies of the book based on number of ads published.

Please contact Marta Blocki to make arrangements for pick up (at the OSSGA office) or shipping at (905) 507-0711 ext. 1 or e-mail mblocki@ossga.com.

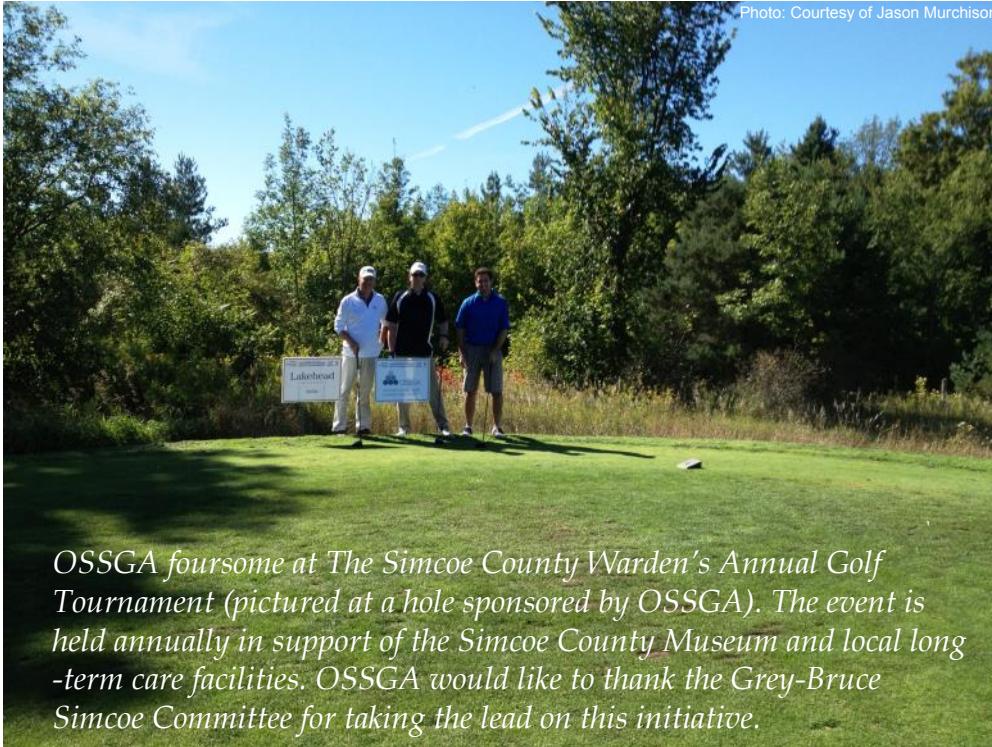
AVENUES

Copies of the fall issue of *Avenues* Magazine will be available shortly. Hard copies of the magazine will be mailed out to all OSSGA members in October. To download a copy of the magazine, please visit www.ossga.com.

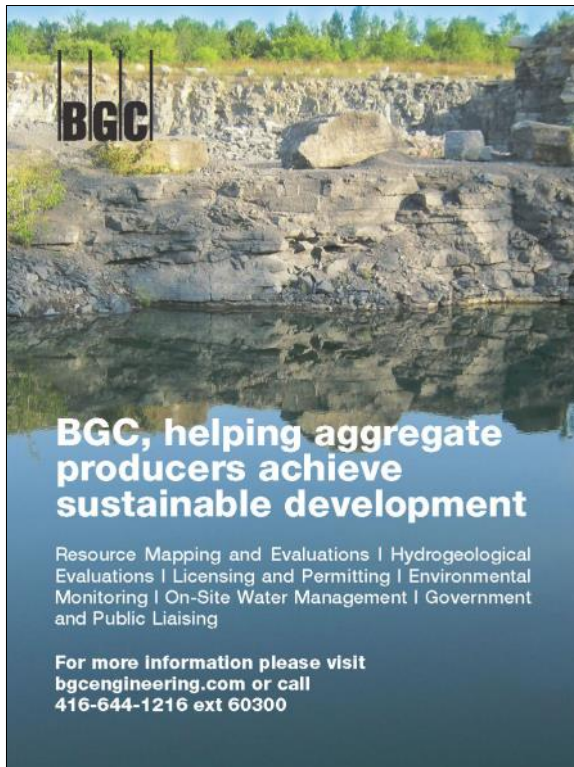
To submit stories and ideas for the next issue (2014 AGM), please contact Marta Blocki at (905) 507-0711 ext. 1 or e-mail mblocki@ossga.com.

Board

Photo: Courtesy of Jason Murchison



OSSGA foursome at The Simcoe County Warden's Annual Golf Tournament (pictured at a hole sponsored by OSSGA). The event is held annually in support of the Simcoe County Museum and local long-term care facilities. OSSGA would like to thank the Grey-Bruce Simcoe Committee for taking the lead on this initiative.



BGC

BGC, helping aggregate producers achieve sustainable development

Resource Mapping and Evaluations | Hydrogeological Evaluations | Licensing and Permitting | Environmental Monitoring | On-Site Water Management | Government and Public Liaising

For more information please visit bgcengineering.com or call 416-644-1216 ext 60300

Rock Talk is published three times a year for members of the Ontario Stone, Sand & Gravel Association. We welcome your suggestions and comments.

OSSGA is a non-profit industry association representing over 250 sand, gravel and crushed stone producers and suppliers of valuable industry products and services that supply most of the approximately 166 million tonnes of aggregate consumed annually in the province to build and maintain Ontario's infrastructure needs. OSSGA works in partnership with government and the public to promote a safe and competitive aggregate industry contributing to the creation of strong communities in the province.

Editor: Marta Blocki

OSSGA STAFF

Marta Blocki
Communications Specialist
mblocki@ossiga.com (ext. 1)

Eva M. Da Silva
Office Manager
edasilva@ossiga.com (ext. 2)

Stephanie Da Silva
Project Manager
sdasilva@ossiga.com (ext. 3)

Julie Harrington
Training & Development Manager
jharrington@ossiga.com (ext. 5)

Moreen Miller
CEO
mmiller@ossiga.com (ext. 4)

Dan Muys
Director of Communications & Marketing
dmuys@ossiga.com (ext. 8)

Cynthia Robinson
Environment & Education Manager
crobinson@ossiga.com (ext. 6)

Mike Scott
Policy & Legislation Manager
mScott@ossiga.com (ext. 7)

Ontario Stone, Sand & Gravel Association
5720 Timberlea Blvd., Suite 103
Mississauga, ON L4W 4W2
T 905-507-0711 F 905-507-0717

www.ossiga.com

www.theholestory.ca



Hydrostatic Drive = Increased Profits

The Liebherr Hydrostatic Driveline, standard on the entire line of articulating wheel loaders, offers increased profitability through greatly reduced fuel consumption, decreased tire wear and virtually no brake wear, given that the Hydrostatic Drive is constantly braking.

Add to this our large Operator's cabin and you will see how your bottom line will be positively impacted through the utilization of the Liebherr Hydrostatic Wheel Loader.



Liebherr-Canada Ltd.

1015 Sutton Drive, Burlington, ON L7L 5Z8

☎ 1-905-319-9222

1-800-387-3922

Fax: 1-905-319-6622

E-Mail: info.lca@liebherr.com

www.liebherr.ca

LIEBHERR

The Group